

CHUPOL AFS-1

Defoamer

Description

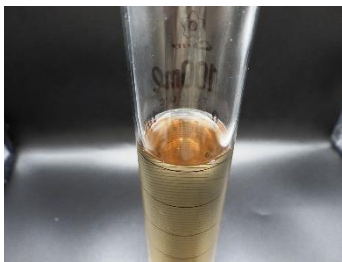
CHUPOL AFS-1 has excellent defoaming performance to control air content in AE concrete or to produce Non-AE concrete. CHUPOL AFS-1 is improved in terms of solubility in PCE type admixtures.

Applications

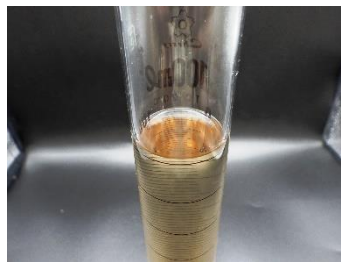
- Ready-mixed concrete
 - Precast / Prestressed concrete
 - Non-AE concrete
-

Advantages

- Reduces problems with entrapped air and surface bubbles
- Increases compressive strength
- Dissolves in PCE type admixtures

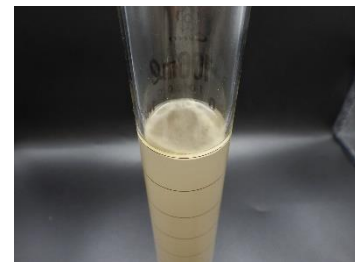


No Defoamer
PCE (S.C. 20%)



CHUPOL AFS-1

0.5% defoamer is added to PCE (S.C. 20%)



General Defoamer

Dosage

There is no standard addition rate for CHUPOL AFS-1. The amount will vary with the solid content of water reducers and local materials like cementitious materials, sand and stone, and with intended concrete performance requirements. The amount is usually in the range of 0.002% to 0.02% of weight of cementitious materials or 0.05% to 2% by weight of PCE type admixtures.

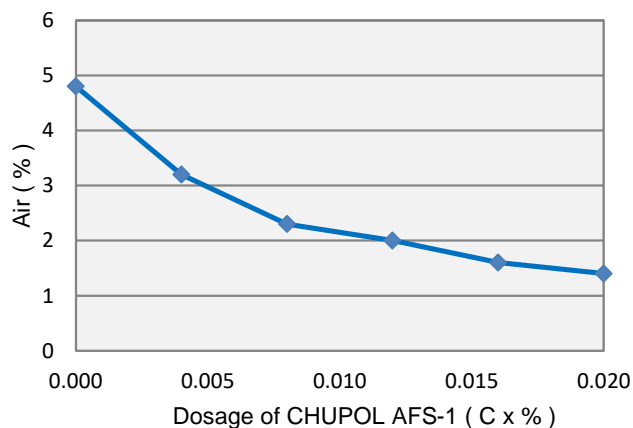
Compatibility

CHUPOL AFS-1 is soluble in PCE type admixtures.

Performance Data

AFS-1 (C x %)	W/C	Unit Weight (kg/m ³)			
		Water	Cement	Fine Agg.	Coarse Agg
0.004-0.02	0.5	165	330	860	979

*Concrete Temp. 20 °C



Characteristic

- Appearance : Light yellowish liquid
- Water content : 0 to 1.0 %
- Density (20°C) : Approx. 1.04 g/cm³
- Chloride content : Nil

Storage

CHUPOL AFS-1 should be stored at 5 to 40 °C. Although freezing does not harm the performance of CHUPOL AFS-1, precautions should be taken to protect it from freezing. If product is frozen, thaw and reconstitute with mechanical agitation. Do not use pressurized air for agitation.

Shelf Life

CHUPOL AFS-1 has a minimum shelf life of 18 months. Please contact TAKEMOTO regarding suitability for use if the shelf life of CHUPOL AFS-1 has been exceeded.

Packaging

CHUPOL AFS-1 is supplied in 190 kg drums and 1000 kg IBCs.

Related Documents

Safety Data Sheet

TAKEMOTO OIL & FAT CO., LTD.

2-5 Minato-machi, Gamagori, Aichi 443-8611 JAPAN

Phone : +81-533-68-2111 (Main Number)

<https://www.takemoto.co.jp/>